

# PROGRAM APLIKASI DISTRIBUSI BARANG DAN JASA VENDOR BERBASIS DEKSTOP DI PT KRAKATAU CHANDRA ENERGI

Nana Sofiana<sup>1</sup>, Zubeida Meilany<sup>2</sup>

<sup>1</sup>Nana Sofiana, D4 - Bisnis Digital, Politeknik Piksi Input Serang, nana@piksiinputserang.ac.id

<sup>2</sup>Zubeida Meilany, D4 - Bisnis Digital, Politeknik Piksi Input Serang, zubed@piksiinputserang.ac.id

## Abstract

*This research focuses on developing a desktop-based application to manage the distribution of goods and vendor services at PT Krakatau Chandra Energi. Currently, the company faces challenges in managing distribution data as it still uses manual methods with Microsoft Excel, which are unstructured and hinder information tracking. The designed application aims to enhance data management efficiency, securely and structurally store information, and simplify the creation of distribution reports. The application will also help reduce data input errors and accelerate the company's operational processes through automation. This research includes user needs analysis, system design, implementation, and application testing to ensure that the application meets the operational needs of PT Krakatau Chandra Energi.*

**Keywords:** *Information System, Goods Distribution, Vendor Service, sDesktop Application, Operational Efficiency, Software Development, PT Krakatau Chandra Energi*

## Abstrak

Penelitian ini berfokus pada pengembangan aplikasi berbasis desktop untuk mengelola distribusi barang dan jasa vendor di PT Krakatau Chandra Energi. Saat ini, perusahaan mengalami kesulitan dalam pengelolaan data distribusi karena masih menggunakan metode manual dengan Microsoft Excel, yang tidak terstruktur dan menyulitkan dalam pelacakan informasi. Aplikasi yang dirancang bertujuan untuk meningkatkan efisiensi pengelolaan data, menyimpan informasi dengan lebih aman dan terstruktur, serta memudahkan pembuatan laporan distribusi. Aplikasi ini juga akan membantu mengurangi kesalahan input data dan mempercepat proses operasional perusahaan melalui otomasi. Penelitian ini mencakup analisis kebutuhan pengguna, desain sistem, implementasi, serta pengujian aplikasi untuk memastikan bahwa aplikasi memenuhi kebutuhan operasional PT Krakatau Chandra Energi.

**Kata Kunci:** Sistem Informasi, Distribusi Barang, Jasa Vendor, Aplikasi Desktop, Efisiensi Operasional, Pengembangan Perangkat Lunak, PT Krakatau Chandra Energi.

## PENDAHULUAN

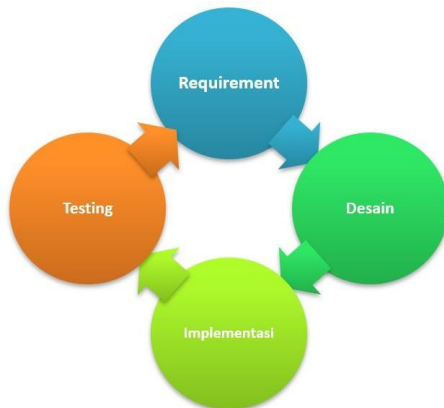
Di era ini, komputer sudah menjadi alat penting untuk membantu setiap kegiatan khususnya di kalangan perusahaan. Berkembangnya pembuatan aplikasi yang dioperasikan pada komputer karena banyaknya kebutuhan dari perusahaan. Perkembangan aplikasi mengupayakan perusahaan terus aktif melengkapi kebutuhan yang diperlukan, misalnya pengelolaan data dengan struktur serta atribut untuk memudahkan proses pencarian data menggunakan aplikasi. Hal pendukung perusahaan lainnya yakni penginputan dimana dapat lebih mudah jika menggunakan bantuan aplikasi.

Penginputan yang dilakukan seperti pengelolaan data barang dan jasa vendor secara terprogram.

Namun, hingga saat ini penginputan masih secara manual menggunakan microsoft excel di PT Krakatau Chandra Energi. Data dimasukkan secara satu per satu dan belum disimpan secara terstruktur sehingga perusahaan mengalami sedikit kesulitan untuk melihat kembali data yang telah dibuat. Hal ini menyebabkan salah satu manager di PT Krakatau Chandra Energi menginginkan aplikasi yang mampu mengelola data serta menyimpan informasi perusahaan karena belum memiliki aplikasi tersebut. Informasi internal yang terdiri dari pendataan distribusi barang dan jasa yang masuk dari vendor

lain, dapat ditampilkan dengan adanya aplikasi. Selain itu, aplikasi tersebut diharapkan dapat menampilkan laporan perusahaan serta dapat melacak kembali data yang telah dibuat. Untuk itu, penulis akan membangun suatu aplikasi berbasis desktop untuk mewujudkan keinginan Perusahaan.

## METODE



**Gambar 1.** Tahap Penelitian.

Pada tahapan penelitian ini diawali dengan requirement, pada requirement melakukan Analisa kebutuhan untuk sistem, dilanjut tahap kedua yaitu desain, dengan membuat desain database dan desain form. Tahap ketiga yaitu implementasi dengan membuat program sesuai dengan desain dan diimplmentasikan dengan penerapan program menggunakan php sebagai backend nya, tahap keempat yaitu dengan testing melakukan pengujian dari hari hasil implementasi sesuai model form dan kebutuhan.

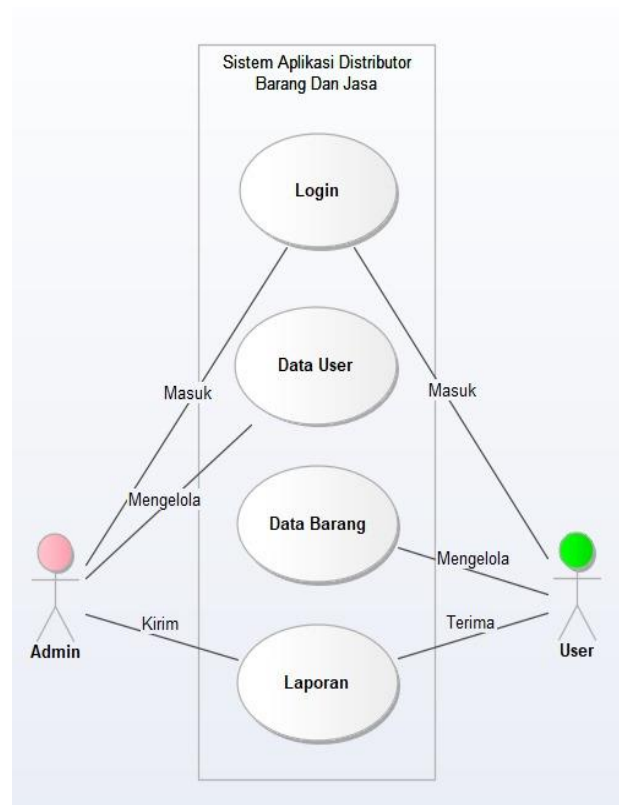
### 1. Requirement

Tahapan pertama pada penelitian ini adalah requirement tentang Analisa kebutuhan yang dilakukan berdasarkan hasil observasi dan wawancara didapatkan bahwa di masing-masing bagian yaitu bagian sudah terhubung dengan jaringan walaupun demikian tiap bagian bekerja dengan file kerjanya sendiri serta memungkinkan terjadinya kesalahan data. Untuk merancang sistem informasi ini diperlukan suatu framework sebagai acuan, berikut alur proses bisnisnya.

### 2. Desain

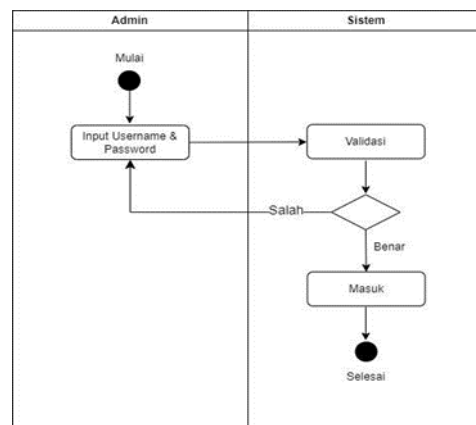
Tahap kedua pada penelitian ini adalah desain, pada tahap ini akan dilakukan desain tentang use case

diagram. Use case dibawah ini menjelaskan aktifitas dan prosedur operasional *system*.

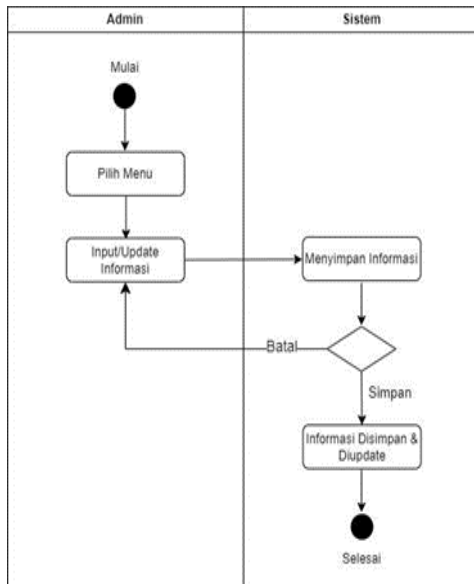


**Gambar 2.** Use case

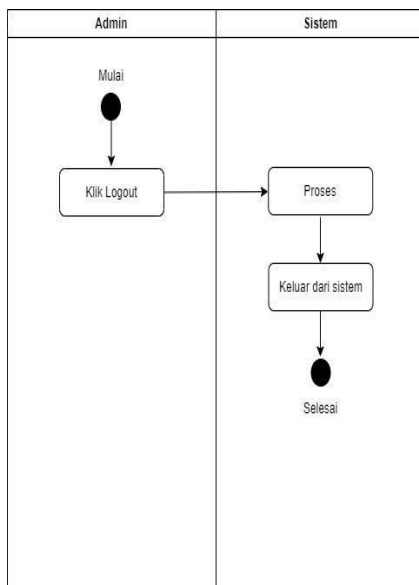
Class diagram dibawah ini menjelaskan skema database operasional.



**Gambar 3.** Activity Diagram Login



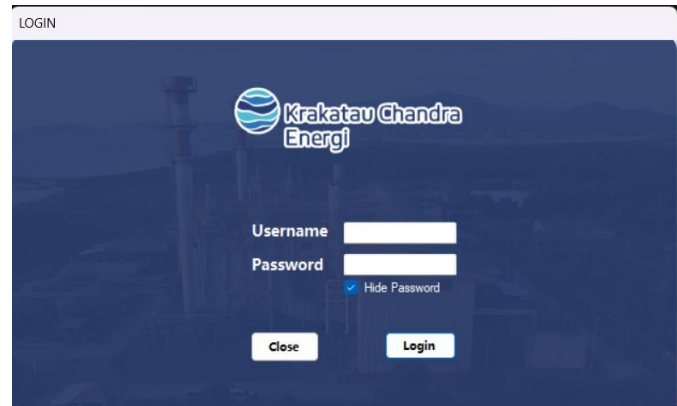
**Gambar 4.** Activity Diagram Input Informasi



**Gambar 5. Activity Diagram Logout**

dilakukan testing pengujian pada sistem informasi, pengujian akan dilakukan pada form transaksi dan laporan, apakah sudah sesuai dengan yang diinginkan atau masih belum terpenuhi, jika belum terpenuhi maka perlu diulang Langkah-langkah nya dari *requirement*.

## HASIL DAN PEMBAHASAN



### Gambar 6 Halaman Login



**Gambar 7. Halaman Menu Utama**

### 3. Implementasi

Pada tahap ketiga yaitu implementasi dari desain use case yang telah dibuat selanjutnya dilakukan proses programming dengan menggunakan HTML sebagai tampilan *front-end* dan PHP sebagai *back-end* nya supaya sesuai dengan proses usecase, class diagram database. Pada proses ini perlu sangat berhati-hati dan dicermati karena agar sesuai dengan hasil yang diinginkan.

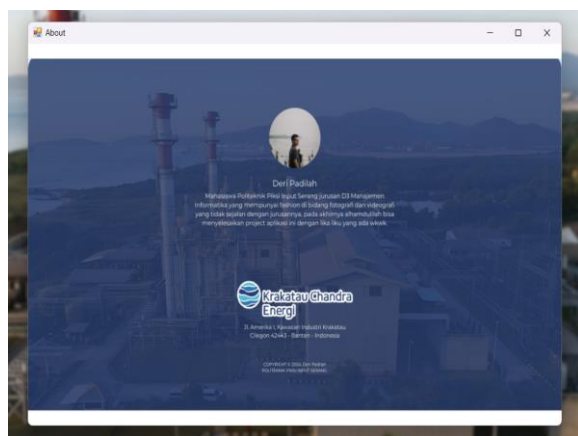
## 4. Testing

Tahapan yang terakhir adalah testing pada level ini setelah implementasi programming telah selesai

Search Data									
ID	Business Service	Product, Unit, Service	Brand	Model Name	Company	Material / Charge	Contract Dates	Ship	Notes
8069	Leasing Service	Calsonic	ISSACON RENA	ISSACON RENA 4800		Material Only	02/20/17-07/17	john.mccall@psgl.com	See Thomas' Email Re: 22
8070	Consultation	EPIC Company	FRANCIS POWER	FRANCIS POWER BER	John Smith		01/20/2016-06/16	john.smith@psgl.com	Re: Page 1 in Section 7.0
8071	Leasing Service	General Service	FRANCIS POWER	FRANCIS POWER BER	John Smith		01/20/2016-06/16	john.smith@psgl.com	Leasing from 7.0 to 8.0
8072	Leasing Service	General Service	BERNARDI TRUMP	BERNARDI TRUMP BER	John Smith		01/20/2016-06/16	john.smith@psgl.com	Leasing from 7.0 to 8.0
8073	Leasing Service	General Service	FRANCIS	FRANCIS POWER	John Smith		01/20/2016-06/16	john.smith@psgl.com	Leasing from 7.0 to 8.0
8074	Leasing Service	General Service	FRANCIS	FRANCIS POWER	John Smith		01/20/2016-06/16	john.smith@psgl.com	Leasing from 7.0 to 8.0
8075	Leasing Service	General Service	FRANCIS	FRANCIS POWER	John Smith		01/20/2016-06/16	john.smith@psgl.com	Leasing from 7.0 to 8.0
8076	Leasing Service	General Service	FRANCIS	FRANCIS POWER	John Smith		01/20/2016-06/16	john.smith@psgl.com	Leasing from 7.0 to 8.0
8077	Leasing Service	General Service	FRANCIS	FRANCIS POWER	John Smith		01/20/2016-06/16	john.smith@psgl.com	Leasing from 7.0 to 8.0
8078	Leasing Service	General Service	FRANCIS	FRANCIS POWER	John Smith		01/20/2016-06/16	john.smith@psgl.com	Leasing from 7.0 to 8.0
8079	Leasing Service	General Service	FRANCIS	FRANCIS POWER	John Smith		01/20/2016-06/16	john.smith@psgl.com	Leasing from 7.0 to 8.0
8080	Leasing Service	General Service	FRANCIS	FRANCIS POWER	John Smith		01/20/2016-06/16	john.smith@psgl.com	Leasing from 7.0 to 8.0
8081	Leasing Service	General Service	FRANCIS	FRANCIS POWER	John Smith		01/20/2016-06/16	john.smith@psgl.com	Leasing from 7.0 to 8.0
8082	Leasing Service	General Service	FRANCIS	FRANCIS POWER	John Smith		01/20/2016-06/16	john.smith@psgl.com	Leasing from 7.0 to 8.0
8083	Leasing Service	General Service	FRANCIS	FRANCIS POWER	John Smith		01/20/2016-06/16	john.smith@psgl.com	Leasing from 7.0 to 8.0
8084	Leasing Service	General Service	FRANCIS	FRANCIS POWER	John Smith		01/20/2016-06/16	john.smith@psgl.com	Leasing from 7.0 to 8.0
8085	Leasing Service	General Service	FRANCIS	FRANCIS POWER	John Smith		01/20/2016-06/16	john.smith@psgl.com	Leasing from 7.0 to 8.0
8086	Leasing Service	General Service	FRANCIS	FRANCIS POWER	John Smith		01/20/2016-06/16	john.smith@psgl.com	Leasing from 7.0 to 8.0
8087	Leasing Service	General Service	FRANCIS	FRANCIS POWER	John Smith		01/20/2016-06/16	john.smith@psgl.com	Leasing from 7.0 to 8.0
8088	Leasing Service	General Service	FRANCIS	FRANCIS POWER	John Smith		01/20/2016-06/16	john.smith@psgl.com	Leasing from 7.0 to 8.0
8089	Leasing Service	General Service	FRANCIS	FRANCIS POWER	John Smith		01/20/2016-06/16	john.smith@psgl.com	Leasing from 7.0 to 8.0
8090	Leasing Service	General Service	FRANCIS	FRANCIS POWER	John Smith		01/20/2016-06/16	john.smith@psgl.com	Leasing from 7.0 to 8.0
8091	Leasing Service	General Service	FRANCIS	FRANCIS POWER	John Smith		01/20/2016-06/16	john.smith@psgl.com	Leasing from 7.0 to 8.0
8092	Leasing Service	General Service	FRANCIS	FRANCIS POWER	John Smith		01/20/2016-06/16	john.smith@psgl.com	Leasing from 7.0 to 8.0
8093	Leasing Service	General Service	FRANCIS	FRANCIS POWER	John Smith		01/20/2016-06/16	john.smith@psgl.com	Leasing from 7.0 to 8.0
8094	Leasing Service	General Service	FRANCIS	FRANCIS POWER	John Smith		01/20/2016-06/16	john.smith@psgl.com	Leasing from 7.0 to 8.0
8095	Leasing Service	General Service	FRANCIS	FRANCIS POWER	John Smith		01/20/2016-06/16	john.smith@psgl.com	Leasing from 7.0 to 8.0
8096	Leasing Service	General Service	FRANCIS	FRANCIS POWER	John Smith		01/20/2016-06/16	john.smith@psgl.com	Leasing from 7.0 to 8.0
8097	Leasing Service	General Service	FRANCIS	FRANCIS POWER	John Smith		01/20/2016-06/16	john.smith@psgl.com	Leasing from 7.0 to 8.0
8098	Leasing Service	General Service	FRANCIS	FRANCIS POWER	John Smith		01/20/2016-06/16	john.smith@psgl.com	Leasing from 7.0 to 8.0
8099	Leasing Service	General Service	FRANCIS	FRANCIS POWER	John Smith		01/20/2016-06/16	john.smith@psgl.com	Leasing from 7.0 to 8.0
8100	Leasing Service	General Service	FRANCIS	FRANCIS POWER	John Smith		01/20/2016-06/16	john.smith@psgl.com	Leasing from 7.0 to 8.0
8101	Leasing Service	General Service	FRANCIS	FRANCIS POWER	John Smith		01/20/2016-06/16	john.smith@psgl.com	Leasing from 7.0 to 8.0
8102	Leasing Service	General Service	FRANCIS	FRANCIS POWER	John Smith		01/20/2016-06/16	john.smith@psgl.com	Leasing from 7.0 to 8.0
8103	Leasing Service	General Service	FRANCIS	FRANCIS POWER	John Smith		01/20/2016-06/16	john.smith@psgl.com	Leasing from 7.0 to 8.0
8104	Leasing Service	General Service	FRANCIS	FRANCIS POWER	John Smith		01/20/2016-06/16	john.smith@psgl.com	Leasing from 7.0 to 8.0
8105	Leasing Service	General Service	FRANCIS	FRANCIS POWER	John Smith		01/20/2016-06/16	john.smith@psgl.com	Leasing from 7.0 to 8.0
8106	Leasing Service	General Service	FRANCIS	FRANCIS POWER	John Smith		01/20/2016-06/16	john.smith@psgl.com	Leasing from 7.0 to 8.0
8107	Leasing Service	General Service	FRANCIS	FRANCIS POWER	John Smith		01/20/2016-06/16	john.smith@psgl.com	Leasing from 7.0 to 8.0
8108	Leasing Service	General Service	FRANCIS	FRANCIS POWER	John Smith		01/20/2016-06/16	john.smith@psgl.com	Leasing from 7.0 to 8.0
8109	Leasing Service	General Service	FRANCIS	FRANCIS POWER	John Smith		01/20/2016-06/16	john.smith@psgl.com	Leasing from 7.0 to 8.0
8110	Leasing Service	General Service	FRANCIS	FRANCIS POWER	John Smith		01/20/2016-06/16	john.smith@psgl.com	Leasing from 7.0 to 8.0
8111	Leasing Service	General Service	FRANCIS	FRANCIS POWER	John Smith		01/20/2016-06/16	john.smith@psgl.com	Leasing from 7.0 to 8.0
8112	Leasing Service	General Service	FRANCIS	FRANCIS POWER	John Smith		01/20/2016-06/16	john.smith@psgl.com	Leasing from 7.0 to 8.0
8113	Leasing Service	General Service	FRANCIS	FRANCIS POWER	John Smith		01/20/2016-06/16	john.smith@psgl.com	Leasing from 7.0 to 8.0
8114	Leasing Service	General Service	FRANCIS	FRANCIS POWER	John Smith		01/20/2016-06/16	john.smith@psgl.com	Leasing from 7.0 to 8.0
8115	Leasing Service	General Service	FRANCIS	FRANCIS POWER	John Smith		01/20/2016-06/16	john.smith@psgl.com	Leasing from 7.0 to 8.0
8116	Leasing Service	General Service	FRANCIS	FRANCIS POWER	John Smith		01/20/2016-06/16	john.smith@psgl.com	Leasing from 7.0 to 8.0
8117	Leasing Service	General Service	FRANCIS	FRANCIS POWER	John Smith		01/20/2016-06/16	john.smith@psgl.com	Leasing from 7.0 to 8.0
8118	Leasing Service	General Service	FRANCIS	FRANCIS POWER	John Smith		01/20/2016-06/16	john.smith@psgl.com	Leasing from 7.0 to 8.0
8119	Leasing Service	General Service	FRANCIS	FRANCIS POWER	John Smith		01/20/2016-06/16	john.smith@psgl.com	Leasing from 7.0 to 8.0
8120	Leasing Service	General Service	FRANCIS	FRANCIS POWER	John Smith		01/20/2016-06/16	john.smith@psgl.com	Leasing from 7.0 to 8.0
8121	Leasing Service	General Service	FRANCIS	FRANCIS POWER	John Smith		01/20/2016-06/16	john.smith@psgl.com	Leasing from 7.0 to 8.0
8122	Leasing Service	General Service	FRANCIS	FRANCIS POWER	John Smith		01/20/2016-06/16	john.smith@psgl.com	Leasing from 7.0 to 8.0
8123	Leasing Service	General Service	FRANCIS	FRANCIS POWER	John Smith		01/20/2016-06/16	john.smith@psgl.com	Leasing from 7.0 to 8.0
8124	Leasing Service	General Service	FRANCIS	FRANCIS POWER	John Smith		01/20/2016-06/16	john.smith@psgl.com	Leasing from 7.0 to 8.0
8125	Leasing Service	General Service	FRANCIS	FRANCIS POWER	John Smith		01/20/2016-06/16	john.smith@psgl.com	Leasing from 7.0 to 8.0
8126	Leasing Service	General Service	FRANCIS	FRANCIS POWER	John Smith		01/20/2016-06/16	john.smith@psgl.com	Leasing from 7.0 to 8.0
8127	Leasing Service	General Service	FRANCIS	FRANCIS POWER	John Smith		01/20/2016-06/16	john.smith@psgl.com	Leasing from 7.0 to 8.0
8128	Leasing Service	General Service	FRANCIS	FRANCIS POWER	John Smith		01/20/2016-06/16	john.smith@psgl.com	Leasing from 7.0 to 8.0
8129	Leasing Service	General Service	FRANCIS	FRANCIS POWER	John Smith		01/20/2016-06/16	john.smith@psgl.com	Leasing from 7.0 to 8.0
8130	Leasing Service	General Service	FRANCIS	FRANCIS POWER	John Smith		01/20/2016-06/16	john.smith@psgl.com	Leasing from 7.0 to 8.0
8131	Leasing Service	General Service	FRANCIS	FRANCIS POWER	John Smith		01/20/2016-06/16	john.smith@psgl.com	Leasing from 7.0 to 8.0
8132	Leasing Service	General Service	FRANCIS	FRANCIS POWER	John Smith		01/20/2016-06/16	john.smith@psgl.com	Leasing from 7.0 to 8.0
8133	Leasing Service	General Service	FRANCIS	FRANCIS POWER	John Smith		01/20/2016-06/16	john.smith@psgl.com	Leasing from 7.0 to 8.0
8134	Leasing Service	General Service	FRANCIS	FRANCIS POWER	John Smith		01/20/2016-06/16	john.smith@psgl.com	Leasing from 7.0 to 8.0
8135	Leasing Service	General Service	FRANCIS	FRANCIS POWER	John Smith		01/20/2016-06/16	john.smith@psgl.com	Leasing from 7.0 to 8.0
8136	Leasing Service	General Service	FRANCIS	FRANCIS POWER	John Smith		01/20/2016-06/16	john.smith@psgl.com	Leasing from 7.0 to 8.0
8137	Leasing Service	General Service	FRANCIS	FRANCIS POWER	John Smith		01/20/2016-06/16	john.smith@psgl.com	Leasing from 7.0 to 8.0
8138	Leasing Service	General Service	FRANCIS	FRANCIS POWER	John Smith		01/20/2016-06/16	john.smith@psgl.com	Leasing from 7.0 to 8.0
8139	Leasing Service	General Service	FRANCIS	FRANCIS POWER	John Smith		01/20/2016-06/16	john.smith@psgl.com	Leasing from 7.0 to 8.0
8140	Leasing Service	General Service	FRANCIS	FRANCIS POWER	John Smith		01/20/2016-06/16	john.smith@psgl.com	Leasing from 7.0 to 8.0
8141	Leasing Service	General Service	FRANCIS	FRANCIS POWER	John Smith		01/20/2016-06/16	john.smith@psgl.com	Leasing from 7.0 to 8.0
8142	Leasing Service	General Service	FRANCIS	FRANCIS POWER	John Smith		01/20/2016-06/16	john.smith@psgl.com	Leasing from 7.0 to 8.0
8143	Leasing Service	General Service	FRANCIS	FRANCIS POWER	John Smith		01/20/2016-06/16	john.smith@psgl.com	Leasing from 7.0 to 8.0
8144	Leasing Service	General Service	FRANCIS	FRANCIS POWER	John Smith		01/20/2016-06/16	john.smith@psgl.com	Leasing from 7.0 to 8.0
8145	Leasing Service	General Service	FRANCIS	FRANCIS POWER	John Smith		01/20/2016-06/16	john.smith@psgl.com	Leasing from 7.0 to 8.0
8146	Leasing Service	General Service	FRANCIS	FRANCIS POWER	John Smith		01/20/2016-06/16	john.smith@psgl.com	Leasing from 7.0 to 8.0
8147	Leasing Service	General Service	FRANCIS	FRANCIS POWER	John Smith		01/20/2016-06/16	john.smith@psgl.com	Leasing from 7.0 to 8.0
8148	Leasing Service	General Service	FRANCIS	FRANCIS POWER	John Smith		01/20/2016-06/16	john.smith@psgl.com	Leasing from 7.0 to 8.0
8149	Leasing Service	General Service	FRANCIS	FRANCIS POWER	John Smith		01/20/2016-06/16	john.smith@psgl.com	Leasing from 7.0 to 8.0
8150	Leasing Service	General Service	FRANCIS	FRANCIS POWER	John Smith		01/20/2016-06/16	john.smith@psgl.com	Leasing from 7.0 to 8.0
8151	Leasing Service	General Service	FRANCIS	FRANCIS POWER	John Smith		01/20/2016-06/16	john.smith@psgl.com	Leasing from 7.0 to 8.0
8152	Leasing Service	General Service	FRANCIS	FRANCIS POWER	John Smith		01/20/2016-06/16	john.smith@psgl.com	Leasing from 7.0 to 8.0
8153	Leasing Service	General Service	FRANCIS	FRANCIS POWER	John Smith		01/20/2016-06/16	john.smith@psgl.com	Leasing from 7.0 to 8.0
8154	Leasing Service	General Service	FRANCIS	FRANCIS POWER	John Smith		01/20/2016-06/16	john.smith@psgl.com	Leasing from 7.0 to 8.0
8155	Leasing Service	General Service	FRANCIS	FRANCIS POWER	John Smith		01/20/2016-06/16	john.smith@psgl.com	Leasing from 7.0 to 8.0
8156	Leasing Service	General Service	FRANCIS	FRANCIS POWER	John Smith		01/20/2016-06/16	john.smith@psgl.com	Leasing from 7.0 to 8.0
8157	Leasing Service	General Service	FRANCIS	FRANCIS POWER	John Smith		01/20/2016-06/16	john.smith@psgl.com	Leasing from 7.0 to 8.0
8158	Leasing Service	General Service	FRANCIS	FRANCIS POWER	John Smith		01/20/2016-06/16	john.smith@psgl.com	Leasing from 7.0 to 8.0
8159	Leasing Service	General Service	FRANCIS	FRANCIS POWER	John Smith		01/20/2016-06/16	john.smith@psgl.com	Leasing from 7.0 to 8.0
8160	Leasing Service	General Service	FRANCIS	FRANCIS POWER	John Smith		01/20/2016-06/16	john.smith@psgl.com	Leasing from 7.0 to 8.0
8161	Leasing Service	General Service	FRANCIS	FRANCIS POWER	John Smith		01/20/2016-06/16	john.smith@psgl.com	Leasing from 7.0 to 8.0
8162	Leasing Service	General Service	FRANCIS	FRANCIS POWER	John Smith		01/20/2016-06/16	john.smith@psgl.com	Leasing from 7.0 to 8.0
8163	Leasing Service	General Service	FRANCIS	FRANCIS POWER	John Smith		01/20/2016-06/16	john.smith@psgl.com	Leasing from 7.0 to 8.0
8164	Leasing Service	General Service	FRANCIS	FRANCIS POWER	John Smith		01/20/2016-06/16	john.smith@psgl.com	Leasing from 7.0 to 8.0
8165	Leasing Service	General Service	FRANCIS	FRANCIS POWER	John Smith		01/20/2016-06/16	john.smith@psgl.com	Leasing from 7.0 to 8.0
8166	Leasing Service	General Service	FRANCIS	FRANCIS POWER	John Smith		01/20/2016-06/16	john.smith@psgl.com	Leasing from 7.0 to 8.0
8167	Leasing Service	General Service	FRANCIS	FRANCIS POWER	John Smith		01/20/2016-06/16	john.smith@psgl.com	Leasing from 7.0 to 8.0
8168	Leasing Service	General Service	FRANCIS	FRANCIS POWER	John Smith		01/20/2016-06/16	john.smith@psgl.com	Leasing from 7.0 to 8.0
8169	Leasing Service	General Service	FRANCIS	FRANCIS POWER	John Smith		01/20/2016-06/16	john.smith@psgl.com	Leasing from 7.0 to 8.0
8170	Leasing Service	General Service	FRANCIS	FRANCIS POWER	John Smith		01/20/2016-06/16	john.smith@psgl.com	Leasing from 7.0 to 8.0
8171	Leasing Service	General Service	FRANCIS	FRANCIS POWER	John Smith		01/20/2016-06/16	john.smith@psgl.com	Leasing from 7.0 to 8.0
8172	Leasing Service	General Service	FRANCIS	FRANCIS POWER	John Smith		01/20/2016-06/16	john.smith@psgl.com	Leasing from 7.0 to 8.0
8173	Leasing Service	General Service	FRANCIS	FRANCIS POWER	John Smith		01/20/2016-06/16	john.smith@psgl.com	Leasing from 7.0 to 8.0
8174	Leasing Service	General Service	FRANCIS	FRANCIS POWER	John Smith		01/20/2016-06/16	john.smith@psgl.com	Leasing from 7.0 to 8.0
8175	Leasing Service	General Service	FRANCIS	FRANCIS POWER	John Smith		01/20/2016-06/16	john.smith@psgl.com	Leasing from 7.0 to 8.0
8176	Leasing Service	General Service	FRANCIS	FRANCIS POWER	John Smith		01/20/2016-06/16	john.smith@psgl.com	Leasing from 7.0 to 8.0
8177	Leasing Service	General Service	FRANCIS	FRANCIS POWER	John Smith		01/20/2016-06/16	john.smith@psgl.com	Leasing from 7.0 to 8.0
8178	Leasing Service	General Service	FRANCIS	FRANCIS POWER	John Smith		01/20/2016-06/16	john.smith@psgl.com	Leasing from 7.0 to 8.0
8179	Leasing Service	General Service	FRANCIS	FRANCIS POWER	John Smith		01/20/2016-06/16	john.smith@psgl.com	Leasing from 7.0 to 8.0
8180	Leasing Service	General Service	FRANCIS	FRANCIS POWER	John Smith		01/20/2016-06/16	john.smith@psgl.com	Leasing from 7.0 to 8.0
8181	Leasing Service	General Service	FRANCIS	FRANCIS POWER	John Smith		01/20/2016-06/16	john.smith@psgl.com	Leasing from 7.0 to 8.0
8182	Leasing Service	General Service	FRANCIS	FRANCIS POWER	John Smith		01/20/2016-06/16	john.smith@psgl.com	Leasing from 7.0 to 8.0
8183	Leasing Service	General Service	FRANCIS	FRANCIS POWER	John Smith		01/20/2016-06/16	john.smith@psgl.com	Leasing from 7.0 to 8.0
8184	Leasing Service	General Service	FRANCIS	FRANCIS POWER	John Smith		01/20/2016-06/16	john.smith@psgl.com	Leasing

**Gambar 8. Halaman Data**

**Gambar 9** Halaman Input Data



**Gambar 10.** Halaman About

## KESIMPULAN

Berdasarkan hasil penelitian dan pengujian Program Aplikasi Distribusi barang dan jasa vendor yang telah dilakukan oleh penulis, maka penulis membangun sebuah Aplikasi Distribusi barang dan jasa vendor pada PT Krakatau Chandra Energi dengan menggunakan bahasa pemrograman VB.NET, dan database Microsoft Access. Sistem ini dapat dengan mudah digunakan oleh pegawai dalam melakukan penginputan data-data barang dan jasa vendor dengan cepat dan efisien serta melakukan pengolahan dan membuat laporan data yang telah di input.

## UCAPAN TERIMA KASIH

Ucapan terima kasih ditulis hanya bagi pihak-pihak yang telah membantu penulis dalam proses penelitian maupun proses pembuatan artikel baik itu dari teknis maupun pembiayaan penelitian.

## DAFTAR PUSTAKA

- [1] Abdul Kadir, "Pengenalan Sistem Informasi Edisi Revisi," Edisi Revisi. 2014.
- [2] R. Taufiq, "Sistem Informasi Manajemen," Yogyakarta: Graha Ilmu, 2013.
- [3] G. Adisaputro and M. Asri, "Anggaran Perusahaan. Edisi kedua," BPFE. Yogyakarta, 2003.
- [4] Cole and Neuschel, Evaluasi Informasi Akuntansi, Enam. Jakarta: Salemba Empat, 2009.
- [5] P. D. Sukardi, "Metodologi penelitian pendidikan," Jakarta: Bumi Aksara, vol. 34, 2003.
- [6] S. S.R, Metodologi Penelitian Bisnis, Untuk Akuntansi dan Manajemen. Yogyakarta: BPEE Universitas Diponegoro, 2009.
- [7] ZM Subekti, KM Prabowo. (2022). Sistem tiket helpdesk pada stmik bani saleh. Jurnal informasi dan Komputer 10 (1), 138-144
- [8] KM Prabowo, MG Gumay, AI Ramadhani. (2020). Perancangan Arsitektur Enterprise Pada STMIK Bani Saleh Menggunakan Framework Togaf Studi Kasus Sistem Informasi Akademik (SIKAD).Jurnal Informatika: Jurnal Pengembangan IT 5 (3), 88-99
- [9] KM Prabowo, ZM Subekti. (2021). Implementasi Sistem Informasi Payroll pada Sekolah Gemanurani. Jurnal Computech & Bisnis (e-Journal) 15 (1), 31-37
- [10] M Ningrum, KM Prabowo, Y Fauzi. (2023). Sistem Informasi Customer Relation Management pada ISP PP. Juragan Wifi Berbasis Web. Jurnal ICT: Information Communication & Technology 23 (1), 6-14
- [11] KM Prabowo, G Tyas, M Maryati, S Hanadwiputra. (2022).IMPLEMENTASI SISTEM INFORMASI COMPUTER BASE TEST PADA SEKOLAH SMK NEGERI 6 KOTA BEKASI. Jurnal Gerbang STMIK Bani Saleh 12 (1), 9-15
- [12] R Ripai, KM Prabowo, E Andiono. (2023). Sistem Informasi Pengaduan Masyarakat Berbasis Website Pada Desa Laban. Jurnal Gerbang STMIK Bani Saleh 13 (1), 48-59
- [13] R Aditia, Y Fauzi, R Ripai, N Sofiana, Z Meilany, KM Prabowo. (2023). SISTEM

PENDUKUNG KEPUTUSAN PEMILIHAN  
PAKET UMROH UNTUK CALON JAMAAH  
DENGAN METODE ANALYTICAL  
HIERARCHY PROCESS (AHP) DAN  
SIMPLE ADDITIVE WEIGHTING (SAW).  
Jurnal Teknologi Informasi dan Digital 1 (1),  
56-75

- [14] DA Puspitawati, KM Prabowo, FA Aldiansyah, S Hanadwiputra. (2023). Implementasi Sistem Informasi Tata Usahapada Sekolah Gemanurani. Jurnal ICT: Information Communication & Technology 23 (1), 57-67
- [15] Y Fauzi, KM Prabowo. (2022). APLIKASI SURAT PERJALANAN DINAS BERBASIS WEB PADA PT. MURNI MAPAN MANDIRI SERANG BANTEN. Jurnal Gerbang STMIK Bani Saleh 12 (2), 41-47
- [16] PI Lestari, SH DwiPutra, KM Prabowo, G Tyas. (2021). Implementasi Sistem Informasi Akuntansi Pada Sekolah Terpadu Gema Nurani. Jurnal ICT: Information Communication & Technology 20 (2), 381-386.